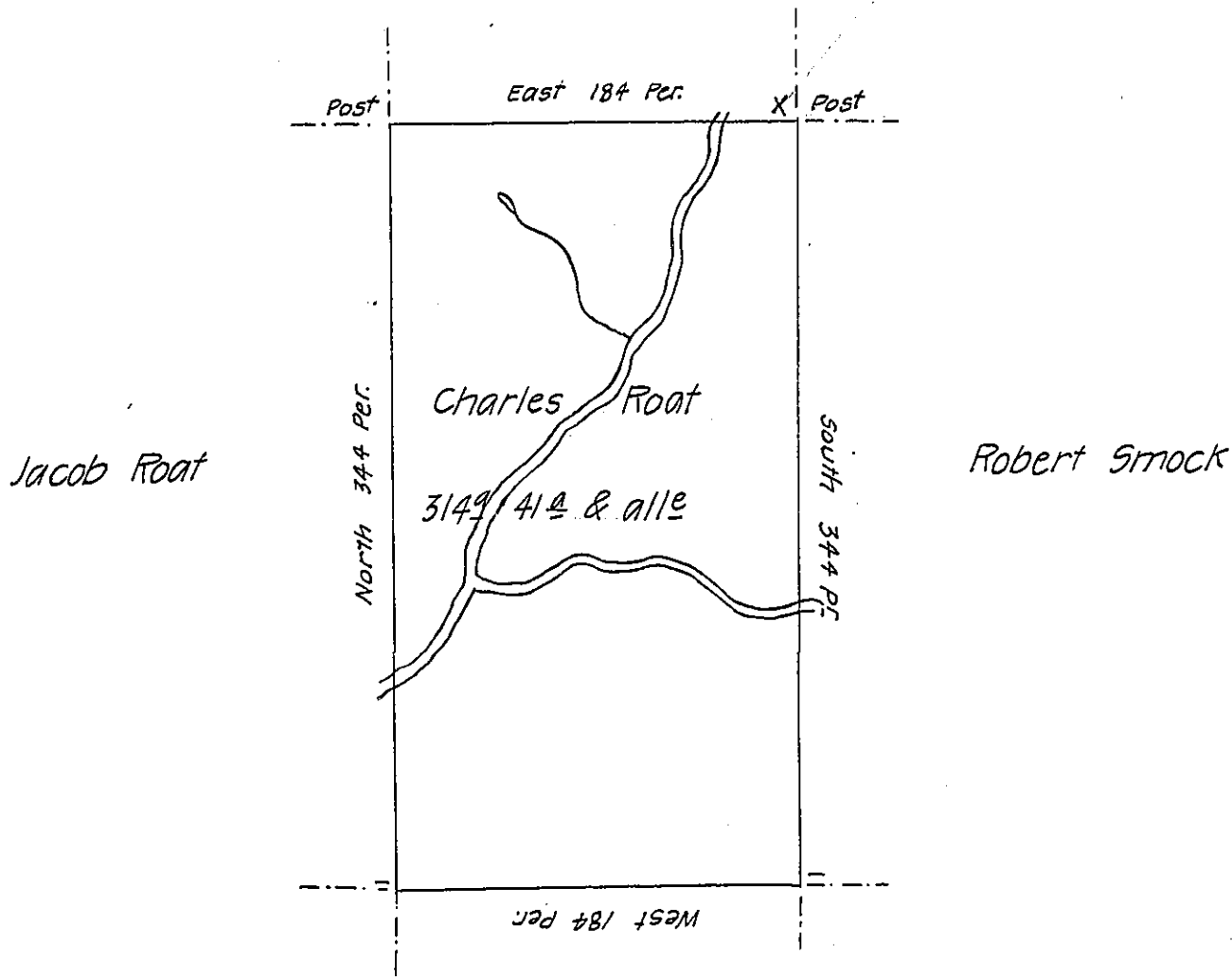


Henry Roat



Donation Surveys
No 1523

Situate on the east side of French Creek in Alegheny County
Containing 314 ⁹⁵ 41 perches & allowance of six per cent for roads
& surveyed the 29th day of May 1795 in pursuance of warrant
dated the 10th day of Aprile 1793.

W^m Power D^y S^c

To Daniel Brodhead Esq^r
Surveyor General.

IN TESTIMONY that the above is a copy of the original remaining on file in
the Department of Internal Affairs of Pennsylvania, made
conformably to an Act of Assembly approved the 16th day of
February, 1833, I have hereunto set my Hand and caused
the Seal of said Department to be affixed at Harrisburg,
this seventh day of March 1907.

Isaac B. Brown
Secretary of Internal Affairs.